

PC Series Tool-Like Thermal Camera

Clearer And Longer Operating, Making Your Work Easier



Introduction

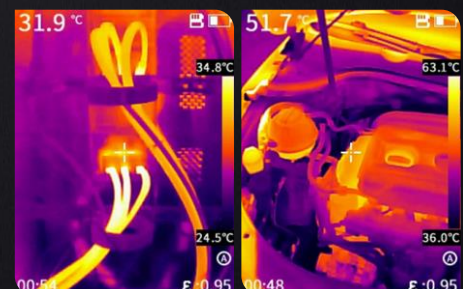
PC Series, Tool-like Handheld Thermal Camera, With excellent performance in image quality and charging battery life, This Thermal Camera adopts 256x192 IR Detector and 2M pixels for visible light. Adopting the New SharpIR composite image enhancement technology, it can provide you with detailed infrared thermal imaging and dual-light fusion images to help you find potential faults more quickly.

Application

- Building Diagnostics
- HVAC Inspection
- Facilities maintenance
- Electrical Application

Features and Benefits

- Adopts 256x192 infrared module with Excellent imaging quality
- 16H Operating time, 2.5H fast charge, easy to cope with two days of work
- Turn on in 1 second And Use, full-frame temperature measurement
- Rugged and Durable, Resistant to 2 meters drop, IP54 Protection Rating
- 4 Color Palettes, And all palettes can display the temperature
- Wide temperature measurement range, -20°C~550°C, Automatic Switch
- Type C interface, Easy to transfer data And support PC screen projection



Specifications

Model	PC210	PC230
Imaging and optics		
Detector type	VOx	
Infrared resolution	256 × 192@12μm	
Wavelength range	7.5 to 14μm	
Focal length	3.2 mm	7 mm
Field of view	56° × 48°	25° × 19°
Minimum object distance	0.3 m	0.5 m
D:S	130:1	
NETD	≤45 mK	≤50 mK
Infrared frame rate	25 Hz / 9 Hz	
Focusing mode	Focus-free	Focus-Automatic
Measurement and analysis		
Measurement range	Support auto-switching: -20°C to 150°C, 100°C to 550°C	
Measurement accuracy	±2°C or ±2%, whichever is greater	
Analyzed target	Center spot and 3 areas	
Tracking / Alarm	Full screen maximum/minimum temperature tracking; The maximum or minimum temperature tracking of analyzed target; full screen temperature threshold alarm (image and flash)	
Temperature measuring parameters	Emissivity, reflected temperature, target distance	
Image display		
Display screen	2.4" LCD	
Digital camera	2 MP	
Image mode	IR, VIS, MIF and PIP	
Image adjustment	Automatic, semi-automatic, manual	
Color palettes	Iron Red, White Hot, Arctic, Rainbow 2, Hot Iron, Rainbow 1	
Storage and transmission		
Storage media	TF card (16 GB and up to 32 GB)	TF card (32 GB)
Image storage format	JPG with temp info	
External interface	TYPE-C, TF card slot, UNC ¼"-20 (tripod mounting)	
Laser	645~655nm, Class 2 laser, < 1mW, only indicating the measured target	
Power system		
Battery type	Rechargeable lithium-ion battery, non-removable	
Battery working time	≥16 hours	
Power management	Timed shutdown and sleep mode	
Charging mode	TYPE-C charging; PC/portable charger; Capable of charging while using	
Charging time	90% of full charge in 2.5 hours	
Environmental parameters		
Working temperature	-15°C to 50°C	
Storage temperature	-40°C to 70°C	
IP rating	IP54	
Drop	2m drop test	
Certification	CE, FCC, ROHS, KCC, IP54, 2m drop test, Damp heat test, Vibration test, Shock test, Impact test, UN38.3, MSDS	
Physical parameters		
Weight	≤375 g	
Size (L × W × H)	194 × 61.5 × 76 mm	
Software kit	ThermoTools	
Standard	A device, Wrist strap, Quick Start Guide, Power adapter, Adapter plug, Type-C USB cable, Data download card, TF card (16 GB), Certificate of approval	A device, Wrist strap, Quick Start Guide, Power adapter, Adapter plug, Type-C USB cable, Data download card, TF card (32 GB), Certificate of approval
Options	Tripod	

